

Appendix 2

I-Phone

Table of Contents

2.1 Installation

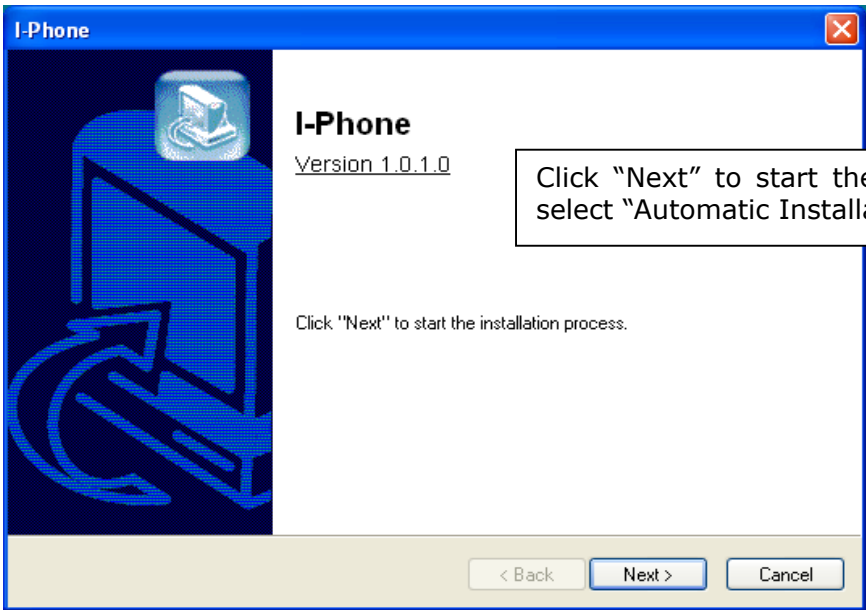
2.2 Execution

2.3 Audio Setup

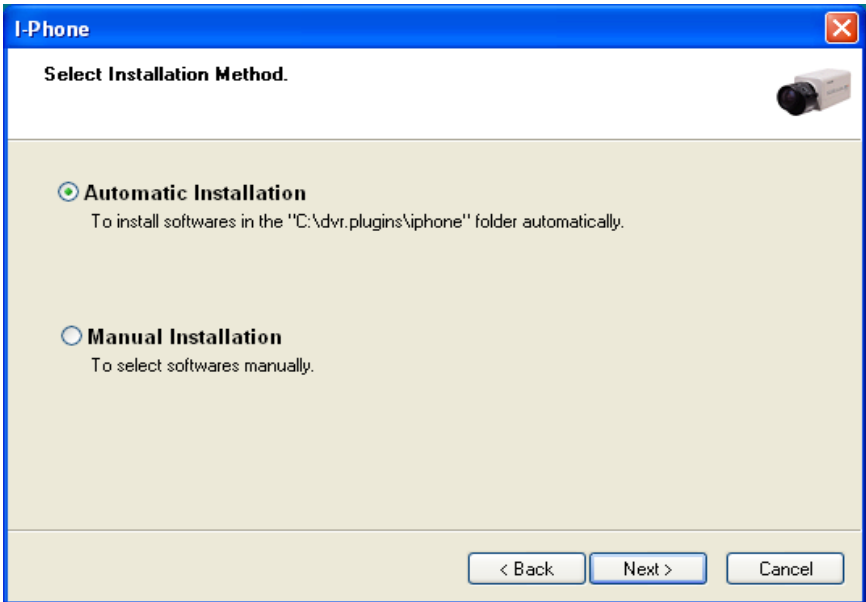
2.1 Installation

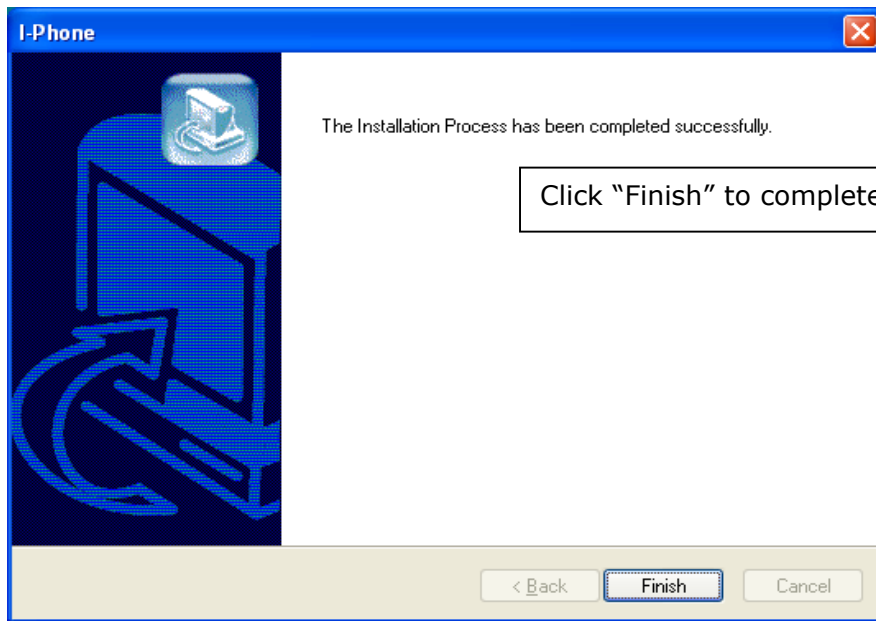


If a Remote Client is used for "Two-way Communication", it must have a fixed IP and "iphone(1.0.1.0).exe" must be installed. For I-Phone installation, double-click on "iphone(1.0.1.0).exe".

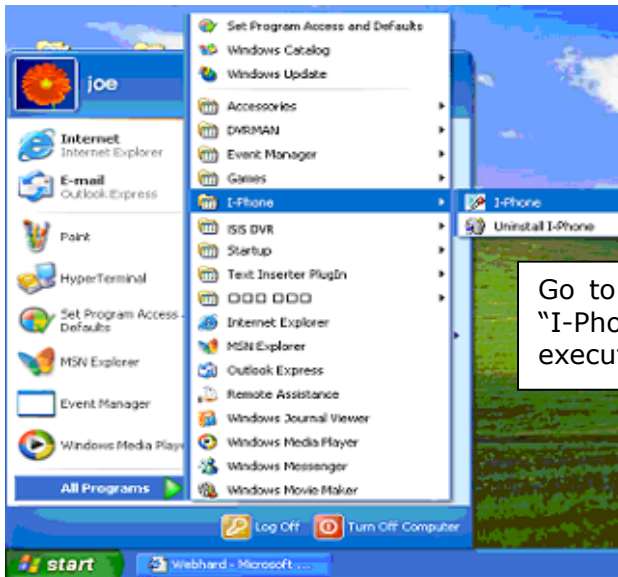


Click "Next" to start the installation process and select "Automatic Installation".





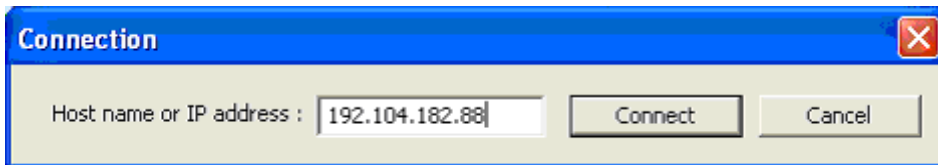
2.2 Execution



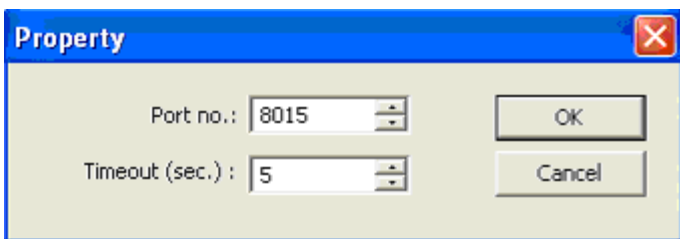
Go to "Start", "All Programs", find "I-Phone" and select it for execution.



Find the I-Phone icon at the right bottom and click it for the next step.

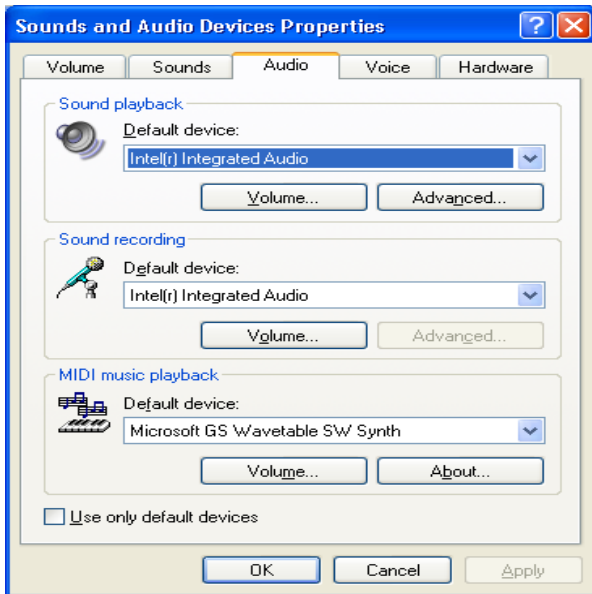
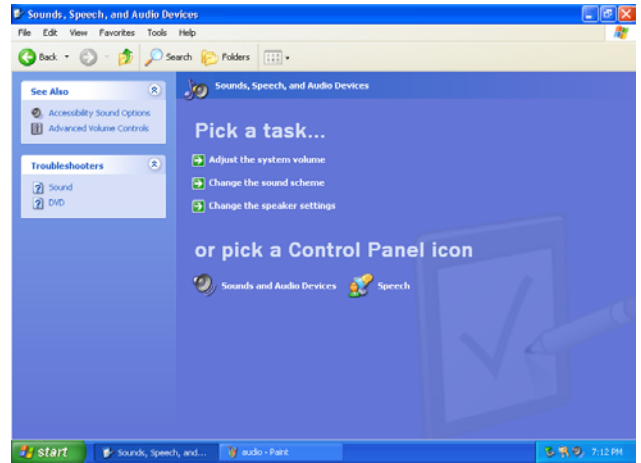
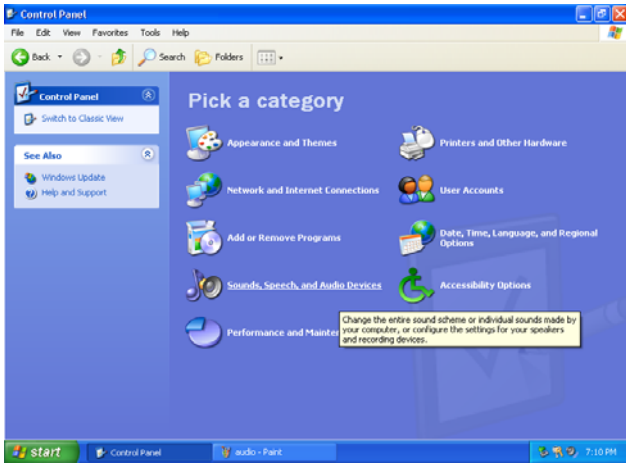


Select "Call" for Two-Way Communication", type in IP address and click "Connect".



Property: The default port number is 8015 and the default timeout value is 5 seconds. Leave them as they are unless other values must be used.

2.3 Audio Setup



Go to "Control Panel", "Sounds, Speech and Audio Devices" and "Sounds and Audio Devices". Then, go to "Audio", "Sound playback" and "Volume".

The ideal audio setup should look like this.

