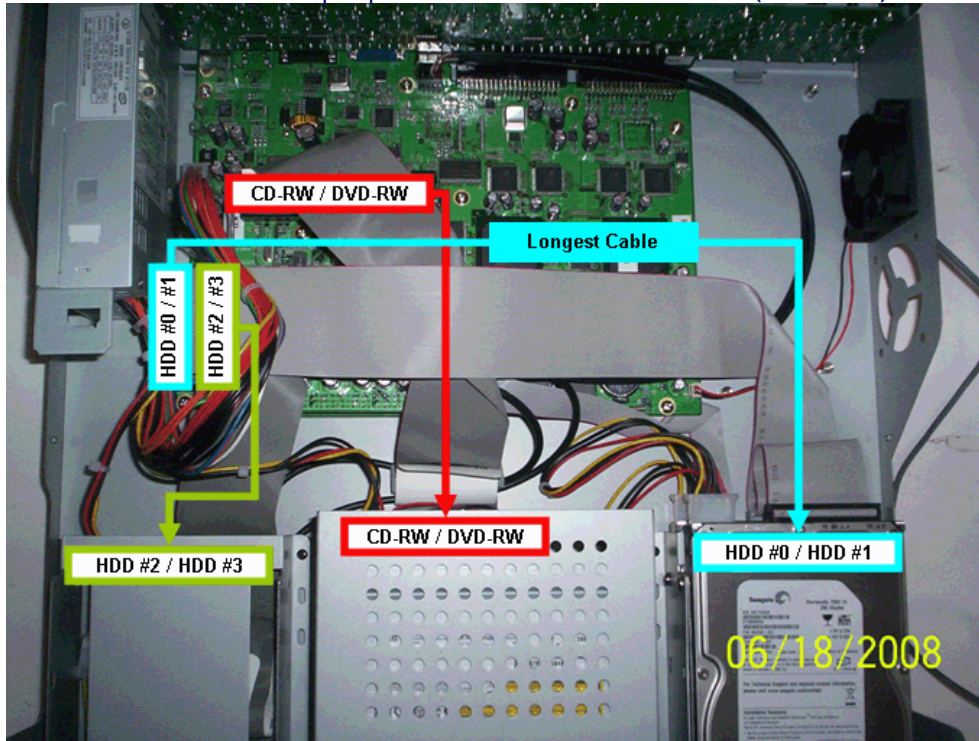


[HDD Installation]

IDE Cable connection for HDD: Black end + Master / Gray end + Slave / Blue end + Board
 HDD #0: Primary Master / #1: Primary Slave / #2: Secondary Master / #3: Secondary Slave
 SEAGATE Surveillance purpose HDD recommended. (SV series)



[F/W Upgrade]

You can download and upgrade F/W with USB thumb drive.
 Please ask your sales representative for F/W downloading.
 The USB thumb drive should only contain the F/W when upgrading.
 Before upgrading, don't forget to press "factory default" button.

a. Download Firmware

Format USB Thumb drive & save F/W in it(Unzip if necessary)

b. XVR Factory Default

Mouse right click < Setup < System < Logon < System < System Update < Factory Default

c. XVR F/W Upgrade

Plug in USB Thumb drive to XVR < Mouse right click < Setup < System < Logon < System < System Update < Firmware Upgrade < Reboot (Occasionally asks for HDD Format) < Unplug USB Thumb drive from XVR < XVR Factory Default once more

d. F/W Upgrade Complete Check

1. Mouse right click < Setup < System < Logon < Network < DDNS SERVER shows "dvrlink.net"
2. Mouse right click < Setup < System < Logon < Alarm/Event < Motion Detection Event Setup < Motion Detection Area Configuration (for each camera) < All area selected (Orange)
3. Mouse right click < Search < Logon < If you see any irregular color or lines on the Playback window, please upgrade F/W once again.

[Time Setup]a. **XVR Factory Default**

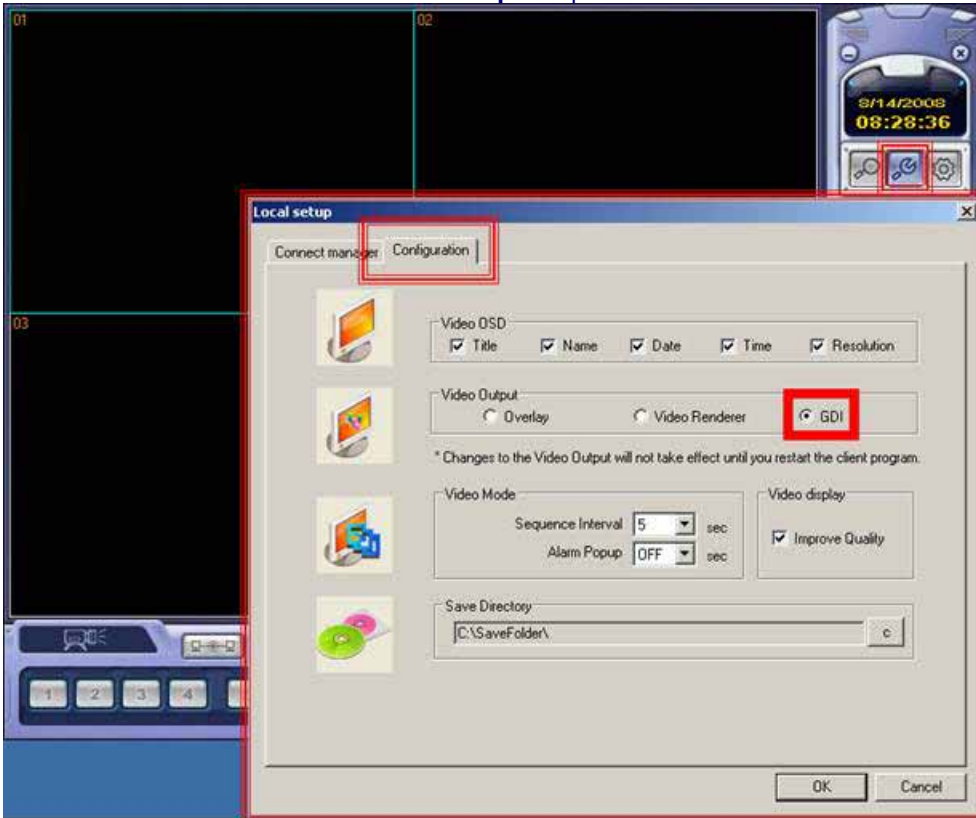
Mouse right click < Setup < System < Logon < System < System Update < Factory Default

b. **Set Date & Time** (If not followed, system reboot may occur.)

Modify Time Zone, Date Format & Time Format only < Apply < Select Date < **Add** 1 minute on Time < Apply < Set Proper Time < Apply < YES

[No Camera Image via Remote Agent]

Please select **GDI** for the **Video output** option.



→ Thank you ←