

ISIS DVR (Integration)

Quick Installation Guide

Version 11.04.x

Digital Video Security System
ISIS Digital Video Recorder

INDEX

1. Installation of DVR Driver	3
1-1. Windows 2000/XP Driver	3
2. Install the Operating Software	4
3. Configure and Run Program	5
3-1. Create Volume	5
3-2. Camera setup	6
3-3. Run DVR Program	7

Quick Installation Guide describes the installation procedure to get quickly.

This procedure is briefly segmented into 3 steps.

1. Install driver (Software).
2. Install Operating software.
3. Configure the setting program to get volume creation and run the Main.

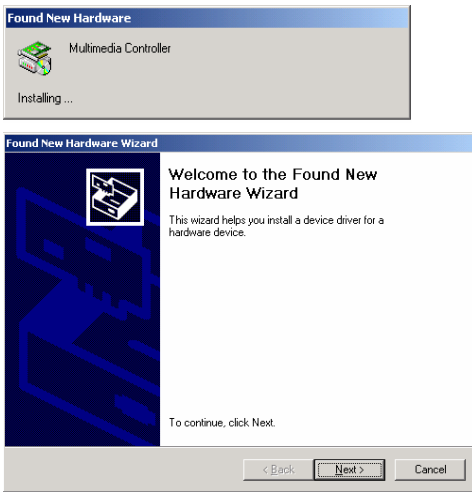
For further detail configuration and explanation, please refer to "Installation and User's Guide".

1. Installation of DVR Driver

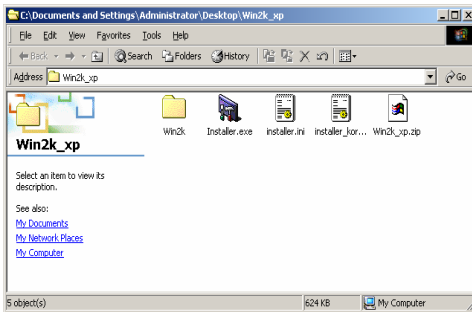
One Driver is applied to CHS Series capture boards.

1. Windows 2000 / XP Driver

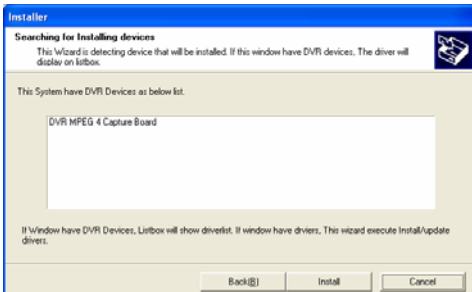
After DVR board inserts into PCI slot, turn on the power switch.
Then following screen appears.



To make the driver installed automatically, press “cancel” at this picture.
Make sure what icon is for “the automatically Installation Driver”
and click “installer.exe” icon.



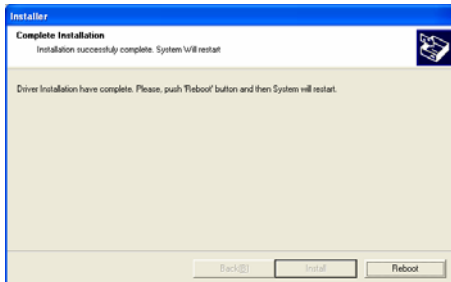
Once clicked “installer.exe”, then the system finds out the concerned device, automatically, as follows.



ISIS DVR

Following is a chart of device list. (Depend on model, different device will be displayed)

Model	Device List
CFS Series	DVR Capture
CLS Series	DVR Live Capture
CHS Series	DVR MPEG 4



After you finish the installation process, let the system rebooted to save the above configurations permanently.

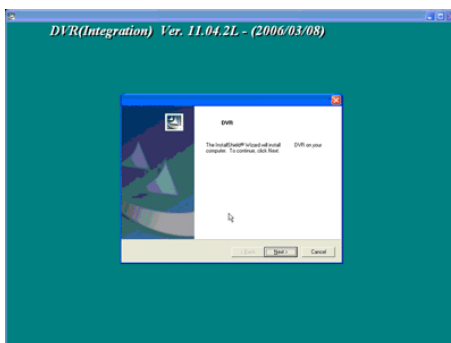
2. Install the Operating Software

Click the “Setup.exe”.

Select OS language as you want to use in the system.



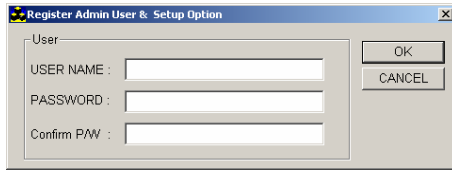
Simply follow the instruction appeared on screen and click “OK” or “Next”.



If you want to install NTSC, select “Program for NTSC”, otherwise, select “Program for PAL” And click “Next”.

The last letter of version indicates the type of board.

i.e.) CFS – **C**, CLS – **L**, CHS – **M**



At above menu box, DVR top management's information shall be inputted, like User ID, Password, Confirm Password

Click "OK" to end the installation.

3. Configure and Run Program

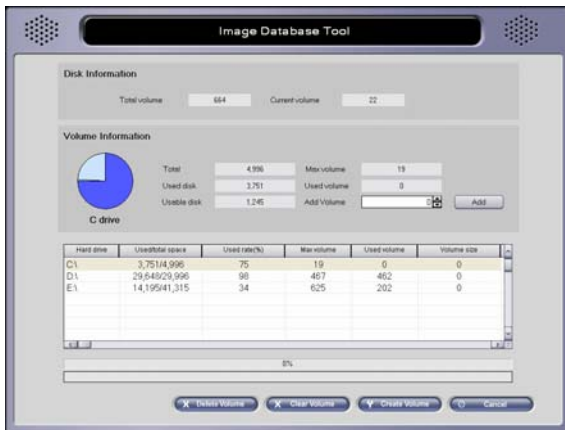
- **Disk tool** - creates volume for database of ISIS file system.
ISIS program creates his own file system so that the huge DVR data can be handled safely in the assigned disk area.
- **System** - sets the network connecting options and the initial number of camera views, sound recording and automatic rebooting, etc.
- **Camera** - sets up to 16 cameras enable/disable and the digital outputs and schedule recording and configuration of pan tilt etc.
- **Sensor** - sets up to 16 sensors and configure the relay to be sensed.
- **Backup** - sets the automatic backup .
- **User admin** - assign the authority as per operators.

3-1. Create Volume

Click "DVR Setting" icon on windows screen, then following picture appears.



Click "Disk tool" . then here you can assign the space for DVR database.

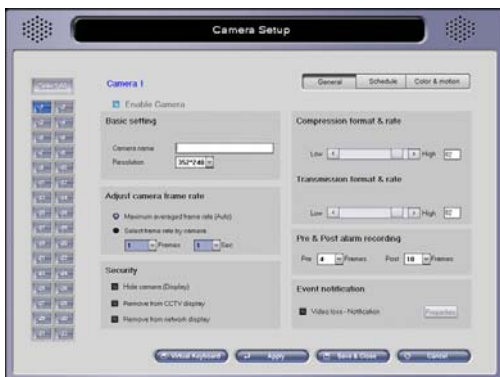


Input the number of volumes desired at "Add Volume" and click "Add". This configuration shall be made at each of Hard Disk. Clicking "Create Volume" creates ISIS file system on all of hard disks.

3-2. Camera Setup



Click "Camera" on Setting Menu screen.



You can set every camera enable or disable by clicking the camera number one by one. Also, you can input all of camera settings as the same as No. 1 camera by clicking "select all". Every camera is able to have different settings such as selection of codec, recording frame, recording schedule, notification and configuration of pan tilt.

ISIS DVR

3-3. Run DVR Program

Run "DVR Main" icon located on Windows screen.



Each of camera images begins to be pop up.

The lights at bottom of screen tell us the status of displaying and recording.